

IOWA DEPARTMENT OF NATURAL RESOURCES
LAND & WATERS BUREAU
WALLACE STATE OFFICE BUILDING

ADDENDUM No. 2

GYPSUM CITY OHV CAMPGROUND
SANITARY SEWER
WEBSTER COUNTY, IOWA
PROJECT NUMBER: 16-02-94-01

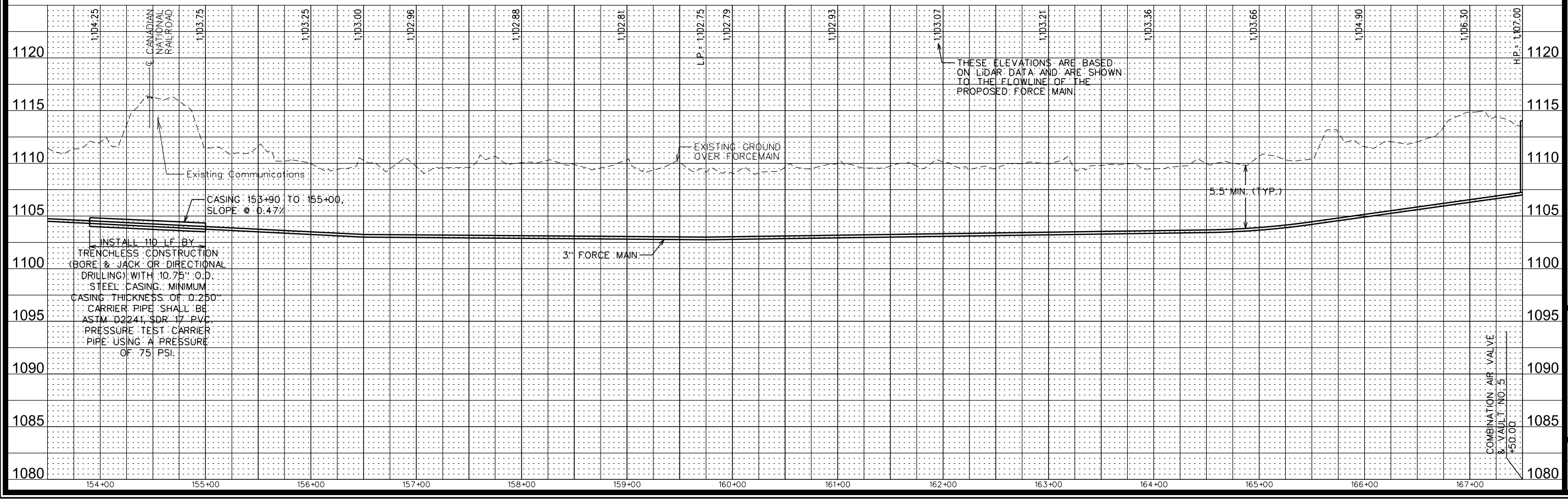
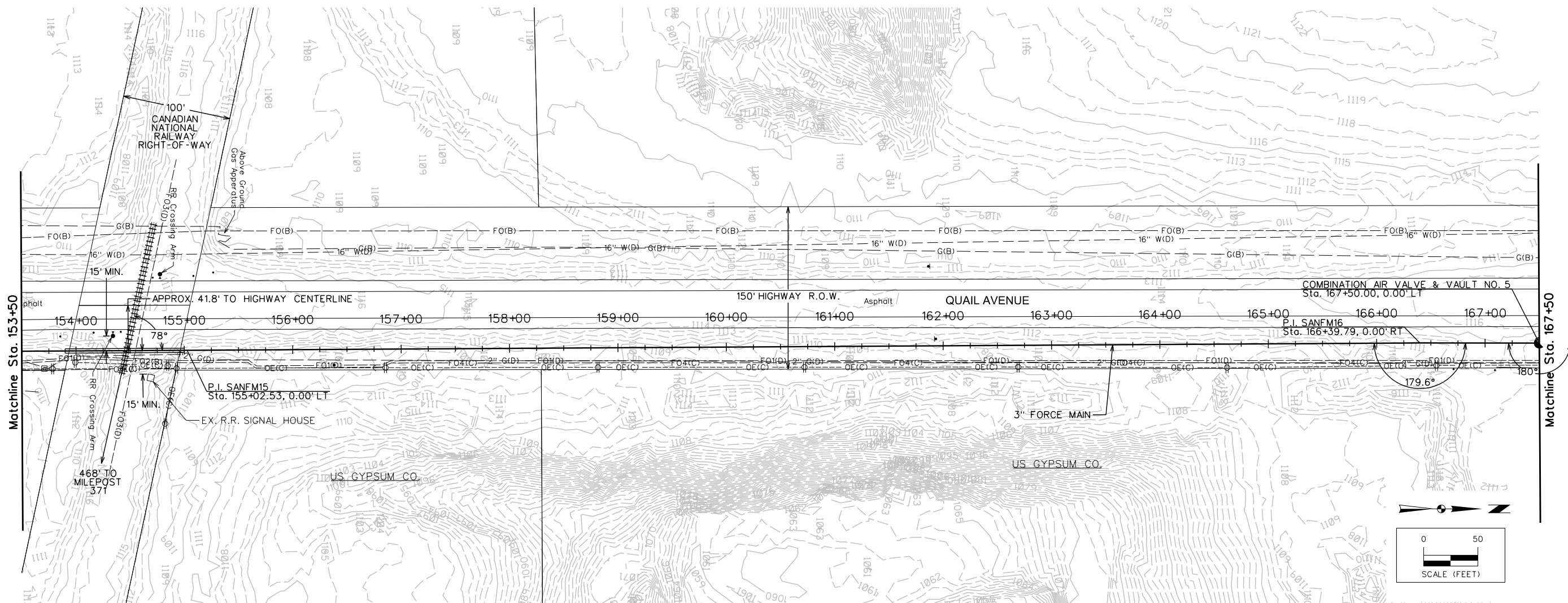
JUNE 21, 2016

This Addendum is issued to modify, explain or correct the original Drawings and Specifications, and is hereby made a part of the Contract Documents. Please attach this Addendum to the Project Manual in your possession. Insert the number and issue date of this Addendum in the blank space provided on the Proposal Form.

PLANS:

- A. G.03 - Base Bid Estimated Project Quantities: Base Bid Item No. 5 - Sanitary Sewer Force Main Trenchless PVC 3-Inch, the estimated quantity shall be 14,262 LF.
- B. D.06 - Sanitary Force Main Plan & Profile: The force main railroad crossing shall maintain a minimum distance of 15 feet from both the railroad crossing arm and railroad signal house per Canadian National Railroad requirements. See attached plan sheet D.06.
- C. C.01 - Detail 4 - Typical Sewer Combination Air Valve and Vault:
 - a. Note 1 - Add the following: Air valve approved equal: 2" A.R.I. D025 fiberglass-reinforced nylon valve.
 - b. Replace Note 2 with the following: Use MJ Tee with MJ adaptors if combination air valve is manufactured by Val-Matic.
 - c. Add Note 3: Air valve shall be rigidly restrained with stainless steel wall brace secured to manhole wall if combination air valve is manufactured by Val-Matic.

6/10/2016 10:47:14 AM
 D:\2014_projects\144_0397_Camp_Sanitary_Plan_Sht.DWG
 Y:\snyder\ibp\144_0397_drivers\ibp\144_0397_Camp_Sanitary_Plan_Sht.DWG



INSTALL 10' LF BY
 TRENCHLESS CONSTRUCTION
 (BORE & JACK OR DIRECTIONAL
 DRILLING) WITH 10.75" O.D.
 STEEL CASING. MINIMUM
 CASING THICKNESS OF 0.250".
 CARRIER PIPE SHALL BE
 ASTM D2241, SDR 17 PVC.
 PRESSURE TEST CARRIER
 PIPE USING A PRESSURE
 OF 75 PSI.

GYPSUM CITY OHV CAMPGROUND - SANITARY SEWER
SANITARY FORCE MAIN PLAN & PROFILE
SNYDER & ASSOCIATES, INC.

WEBSTER COUNTY, IOWA
 2727 S.W. SNYDER BLVD.
 ANKENY, IOWA 50023
 515-964-2020 | www.snyder-associates.com

Project No: 1140397
 Sheet D.06

MARK	REVISION	DATE	BY
Engineer: BMP	Checked By: CAP	6/10/2016	Scale: 1"=50'
Technician: DFM	Date: 1140397		Field Bk: Sheet D.06